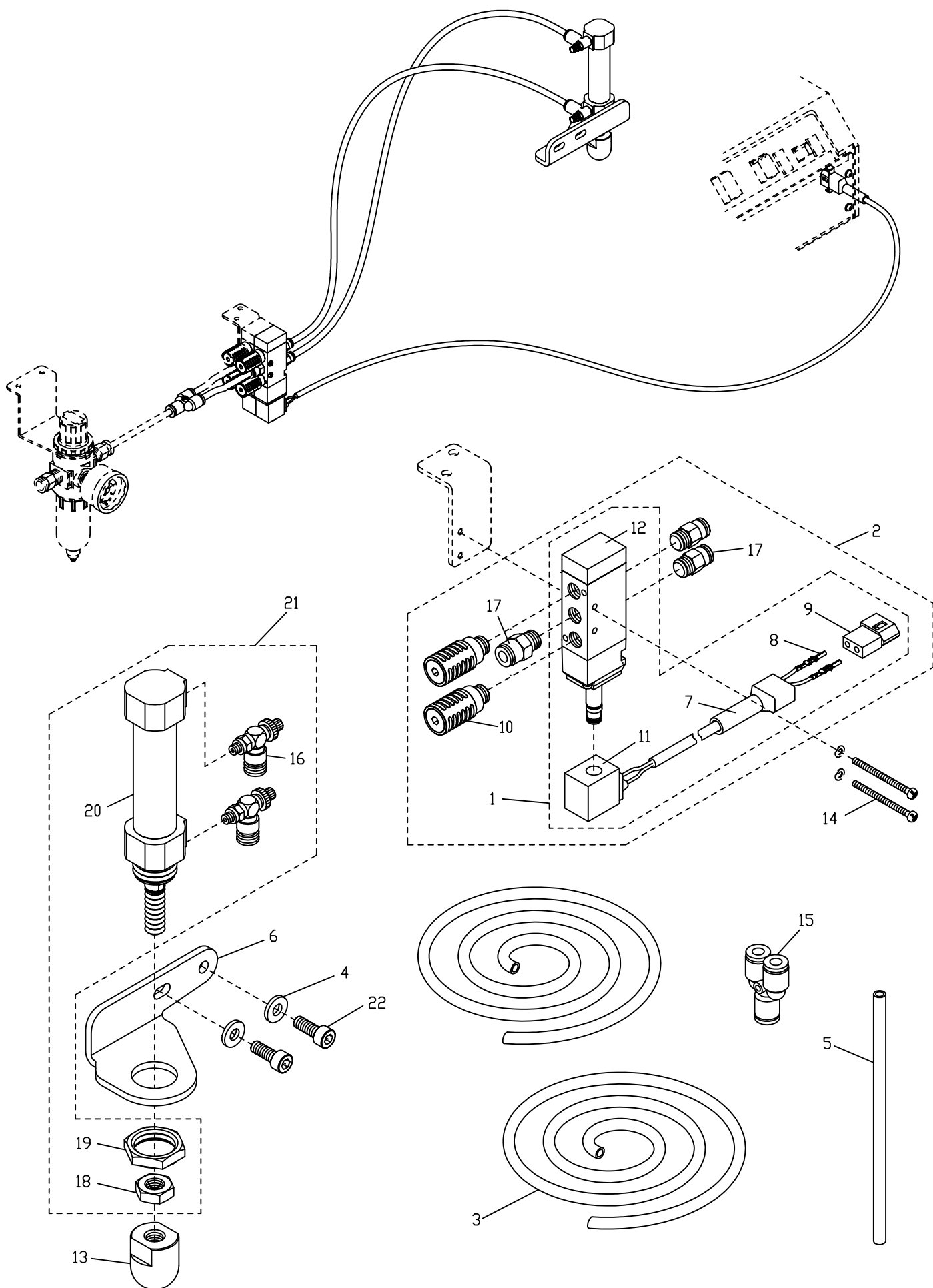


1.AL14N 氣動式壓腳提升裝置 (伺服馬達用)



1. AL14N 氣動式壓腳提昇裝置 (伺服馬達用)

Pneumatic Presser Foot Lifter For AL14N (A/C Servo Motor Uses)

| 序號 Ref.No. | 物料編號 Parts No. | 名稱 Description | 單位用量 Amt.Req. |
|---------------|-------------------|---------------------------------------|------------------|
| 1 | 4AL03BA0101 | 換向閥組 Electromagnetic Valve Asm. ----- | 1 |
| 2 | 4AL03BA0102 | 換向閥組 Electromagnetic Valve Asm. ----- | 1 |
| 3 | 4AL03B0103 | φ6空氣管 Air Tube (L= 800mm) ----- | 2 |
| 4 | 2100000323 | 墊圈 Washer ----- | 2 |
| 5 | 4CS0010216 | φ6空氣管 Air Tube (L= 150mm) ----- | 1 |
| 6 | 4UTB030216 | 固定座 Bracker Holder ----- | 1 |
| 7 | 4AL013013 | 連接器套頭2P Power cord cap ----- | 1 |
| 8 | 4AL013015 | 母端子 Power cord ----- | 2 |
| 9 | 4AL013017 | 2P母扣連接器 Power cord ----- | 1 |
| 10 | 4PA0000310 | 消音器 Silencer ----- | 2 |
| 11 | 4PA0000314 | 線圈 Solenoid (DC 24V) ----- | 1 |
| 12 | 4PA0000315 | 換向閥 Electromagnetic Valve ----- | 1 |
| 13 | 4PFE010113 | 套管 Clutch Sleeve ----- | 1 |
| 14 | 8MC03204006D | 螺絲 Screw (CS0211 M3-0.5*40) ----- | 2 |
| 15 | 4TC012016 | φ6 Y型管接頭 Y Connector ----- | 1 |
| 16 | 4UTB000305 | 節流閥 Speed Controller ----- | 2 |
| 17 | 4UTB000312 | φ6空氣管接頭 Connector ----- | 3 |
| 18 | 8MA10600617A | 螺帽 Nut ----- | 1 |
| 19 | 8MA22600627A | 螺帽 Nut ----- | 1 |
| 20 | 4UTB030223 | 氣壓缸 Cylinder ----- | 1 |
| 21 | 4UTB03A0217 | 氣壓缸組 Cylinder Asm----- | 1 |
| 22 | 8MM06401510A | 螺絲 Screw (MT0845 M6-1*15) ----- | 2 |

AL14N : CTD9000 / CTD9611 / FTD7000 機型並配合伺服馬達使用 <型號HVP-60,HVP-70,HVP-90>

Must be used together with AC servo motor, HVP-60 or HVP-70 or HVP-90, for CTD9000 / CTD9611 / FTD7000 three models.